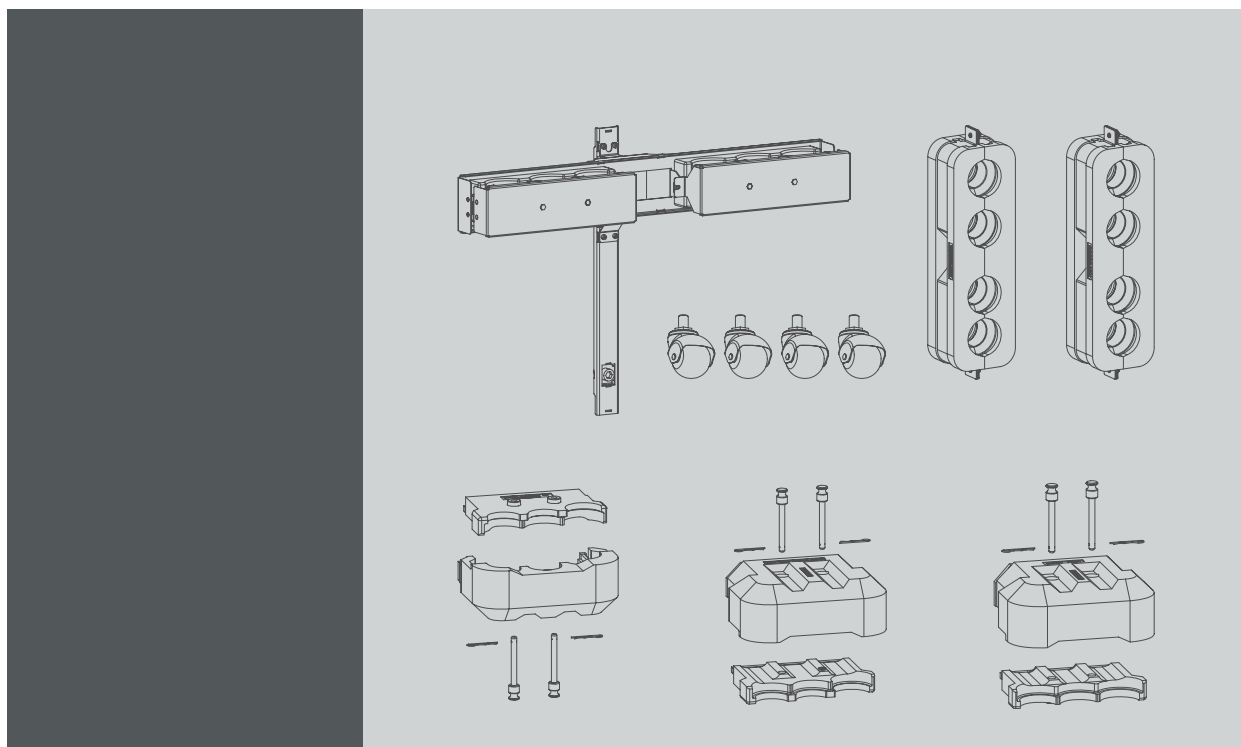


DP4K-L accessory kit



Installation manual

Barco NV

President Kennedypark 35, 8500 Kortrijk, Belgium

Phone: +32 56.36.82.11

Fax: +32 56.36.883.86

Support: www.barco.com/en/support

Visit us at the web: www.barco.com

Printed in Belgium

Changes

Barco provides this manual 'as is' without warranty of any kind, either expressed or implied, including but not limited to the implied warranties or merchantability and fitness for a particular purpose. Barco may make improvements and/or changes to the product(s) and/or the program(s) described in this publication at any time without notice.

This publication could contain technical inaccuracies or typographical errors. Changes are periodically made to the information in this publication; these changes are incorporated in new editions of this publication.

The latest edition of Barco manuals can be downloaded from the Barco web site www.barco.com or from the secured Barco web site <https://www.barco.com/en/signin>.

Copyright ©

All rights reserved. No part of this document may be copied, reproduced or translated. It shall not otherwise be recorded, transmitted or stored in a retrieval system without the prior written consent of Barco.

Disposal Information

Waste Electrical and Electronic Equipment



■ This symbol on the product indicates that, under the European Directive 2012/19/EU governing waste from electrical and electronic equipment, this product must not be disposed of with other municipal waste. Please dispose of your waste equipment by handing it over to a designated collection point for the recycling of waste electrical and electronic equipment. To prevent possible harm to the environment or human health from uncontrolled waste disposal, please separate these items from other types of waste and recycle them responsibly to promote the sustainable reuse of material resources.

For more information about recycling of this product, please contact your local city office or your municipal waste disposal service.

For details, please visit the Barco website at: <http://www.barco.com/en/AboutBarco/weee>

Guarantee and Compensation

Barco provides a guarantee relating to perfect manufacturing as part of the legally stipulated terms of guarantee. On receipt, the purchaser must immediately inspect all delivered goods for damage incurred during transport, as well as for material and manufacturing faults Barco must be informed immediately in writing of any complaints.

The period of guarantee begins on the date of transfer of risks, in the case of special systems and software on the date of commissioning, at latest 30 days after the transfer of risks. In the event of justified notice of complaint, Barco can repair the fault or provide a replacement at its own discretion within an appropriate period. If this measure proves to be impossible or unsuccessful, the purchaser can demand a reduction in the purchase price or cancellation of the contract. All other claims, in particular those relating to compensation for direct or indirect damage, and also damage attributed to the operation of software as well as to other services provided by Barco, being a component of the system or independent service, will be deemed invalid provided the damage is not proven to be attributed to the absence of properties guaranteed in writing or due to the intent or gross negligence or part of Barco.

If the purchaser or a third party carries out modifications or repairs on goods delivered by Barco, or if the goods are handled incorrectly, in particular if the systems are operated incorrectly or if, after the transfer of risks, the goods are subject to influences not agreed upon in the contract, all guarantee claims of the purchaser will be rendered invalid. Not included in the guarantee coverage are system failures which are attributed to programs or special electronic circuitry provided by the purchaser, e.g. interfaces. Normal wear as well as normal maintenance are not subject to the guarantee provided by Barco either.

The environmental conditions as well as the servicing and maintenance regulations specified in this manual must be complied with by the customer.

Trademarks

Brand and product names mentioned in this manual may be trademarks, registered trademarks or copyrights of their respective holders. All brand and product names mentioned in this manual serve as comments or examples and are not to be understood as advertising for the products or their manufacturers.

TABLE OF CONTENTS

1. DP4K-L series accessory kit 3

1.1 Kit content 3

1.2 Installation process 5

1.3 Assembling the support frame 6

1.4 Installing the support frame for hoses upwards 7

1.5 Installing the support frame for hoses downwards 8

1.6 Installing insulation shells projector side hoses upwards 9

1.7 Installing insulation shells projector side hoses downwards 10

1.8 Installing insulation shells on the chiller side 11

1.9 Installing the plastic catch basin 12

1.10 Installing the castor wheels 13

1. DP4K-L SERIES ACCESSORY KIT

Purpose of this upgrade kit

This accessory kit may only be used to support and isolate the coupling of the hoses of the projector.

Where to use

There exist two accessory kits for the DP4K-L series. One for the DP4K-22L and DP4K-30L and one for the DP4K-45L and DP4K-60L. For ordering numbers see Barco website www.barco.com.

About this document

This document gives a brief introduction of the accessory kit and explains with detailed step by step instructions how to install the insulation shells and the hoses support assembly. The latest version of this document can be downloaded from the Barco website www.barco.com.



WARNING: The procedures below may only be performed by Barco trained and qualified technicians.

Overview

- Kit content
- Installation process
- Assembling the support frame
- Installing the support frame for hoses upwards
- Installing the support frame for hoses downwards
- Installing insulation shells projector side hoses upwards
- Installing insulation shells projector side hoses downwards
- Installing insulation shells on the chiller side
- Installing the plastic catch basin
- Installing the castor wheels

1.1 Kit content

In the box:

- Insulation shells hoses upwards projector rear-left side (1 set, reference 1 image 1-1)
- Insulation shells hoses downwards projector rear-left side (1 set, reference 2 image 1-1)
- Insulation shells hoses upwards/downwards projector rear-right side (1 set, reference 3 image 1-1)

1. DP4K-L series accessory kit

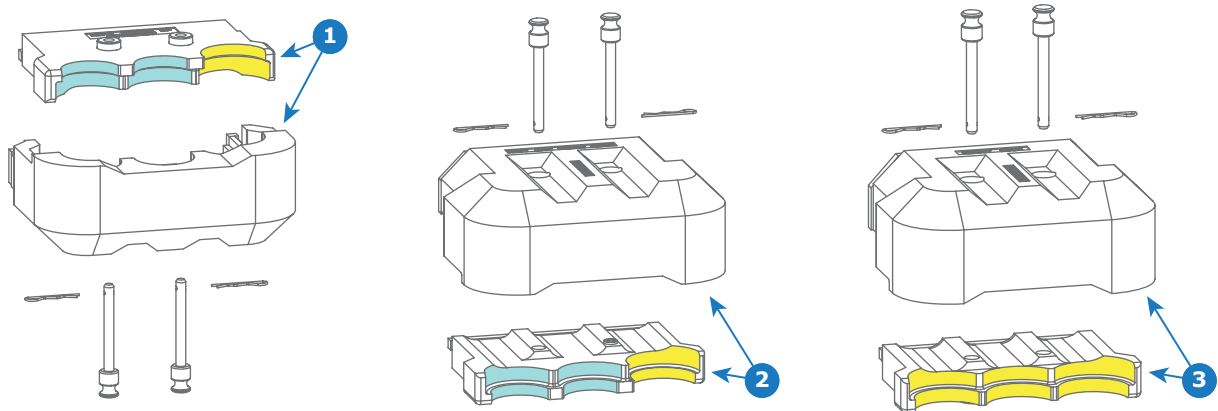


Image 1-1

- Hoses support frame projector side (1 piece, reference 4 image 1-2)
- Mounting bracket for support frame (1 piece, reference 5 image 1-2)
- Mounting hook for support frame (1 piece, reference 6 image 1-2)

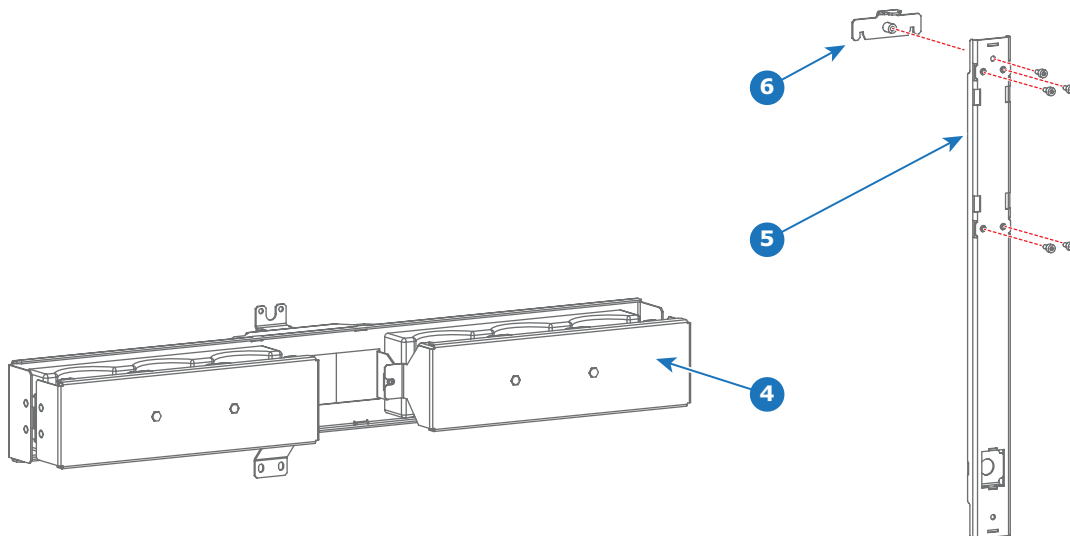


Image 1-2

- Insulation shells hoses chiller side (1 set per chiller unit, reference 7 image 1-3)
- Stacking brackets for chiller (4 pieces per chiller unit, reference 8 image 1-3)

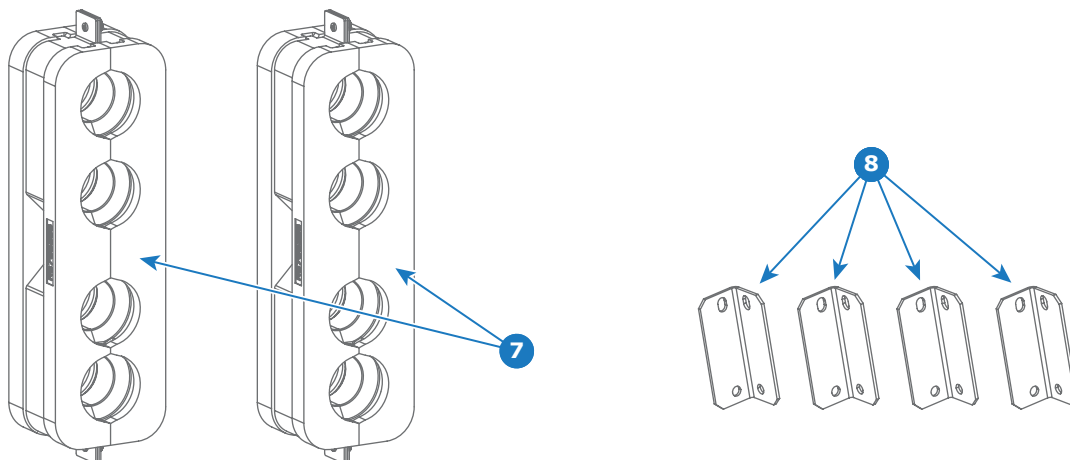


Image 1-3

- Plastic catch basin to collect condensed water of projector (1 piece for DP4K-22L or DP4K-30L and 2 pieces for DP4K-45L or DP4K-60L, reference 9 image 1-4).

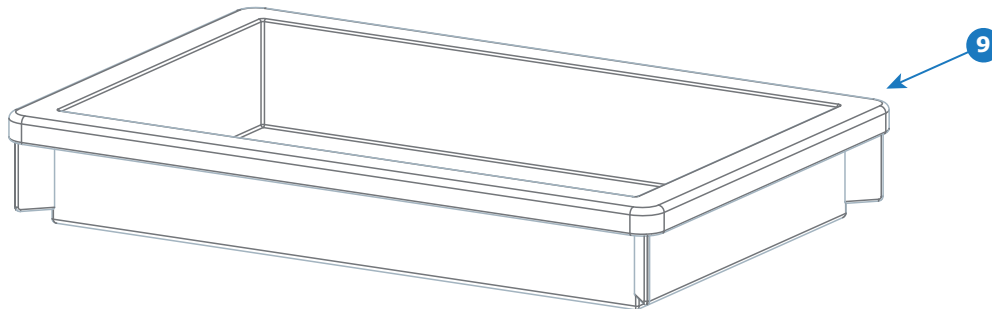


Image 1-4

- Dummy sealing block (1 piece for DP4K-22L or DP4K-30L, reference 10 image 1-5).

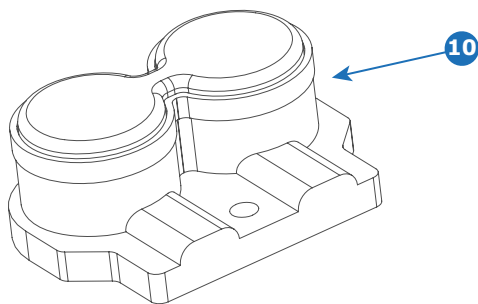


Image 1-5

- Castor wheels (4 pieces per chiller)

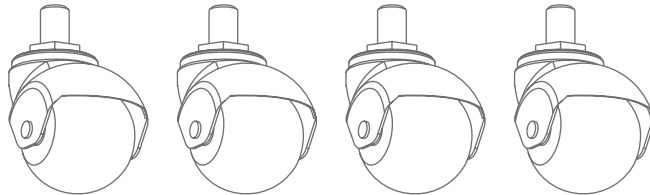


Image 1-6

1.2 Installation process



WARNING: This procedure assumes that the projector and chillers are switched off. If not, switch off the projector and chillers prior to start with the installation of this accessory kit.

Process overview

1. Installing the chiller stacking brackets. See installation manual of the chiller.
2. "Assembling the support frame", page 6
3. "Installing the support frame for hoses upwards", page 7
or
"Installing the support frame for hoses downwards", page 8 .
4. "Installing insulation shells projector side hoses upwards", page 9
or
"Installing insulation shells projector side hoses downwards", page 10
5. "Installing insulation shells on the chiller side", page 11

6. "Installing the plastic catch basin", page 12.
7. "Installing the castor wheels", page 13. (optional)

1.3 Assembling the support frame

What has to be done?

The hoses support frame has to be mounted on the bracket. The mounting orientation depends on the direction, upwards or downwards, the hoses because the support frame is not symmetric. The left side (L) of the support frame is shorter than the right side (R).

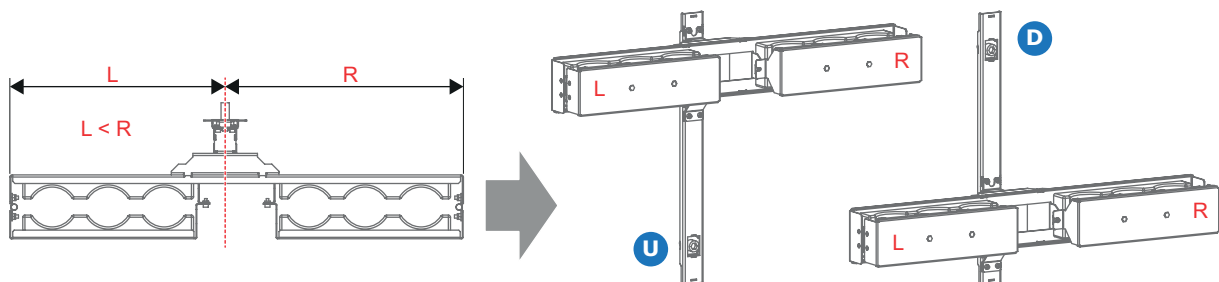


Image 1-7

- U Support frame mounted on the bracket in case hoses goes upwards.
D Support frame mounted on the bracket in case hoses goes downwards.

Necessary tools

3 mm Allen wrench.

How to assemble the support frame for the hoses?

1. Remove the four screws from the bracket.
2. Place the support frame on the bracket and fasten with the four screws which were removed in step 1.

Caution: Ensure to orient the support frame correctly onto the bracket. In case the hoses goes downwards use position D as illustrated. In case the hoses goes upwards use position U as illustrated.

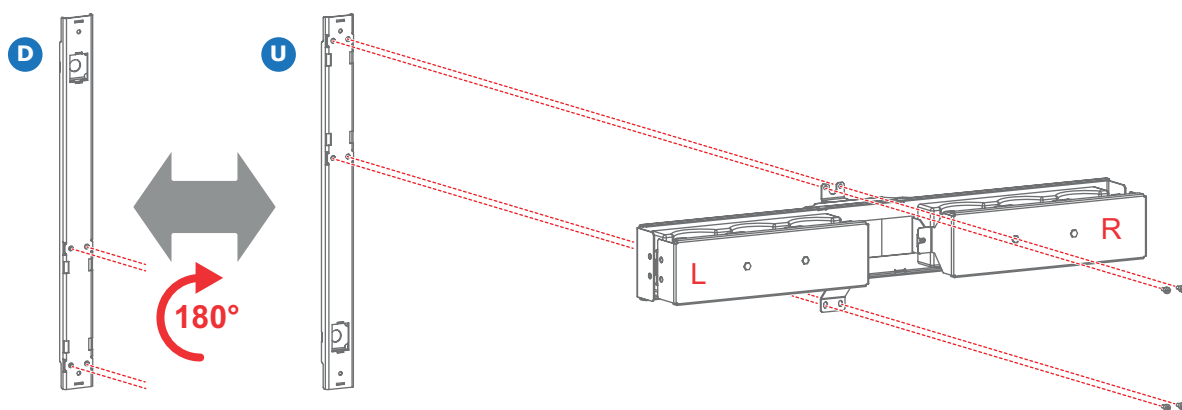


Image 1-8

1.4 Installing the support frame for hoses upwards



This procedure assumes that the hoses are not yet connected with the projector. If connected, disconnect the hoses prior to start with this procedure.

Necessary tools

- 3mm Allen wrench
- 10mm Allen wrench

How to install the support frame for hoses going upwards?

1. Slide and rotate the mounting hook (reference 1 image 1-9) into the upper slot at the rear side of the projector as illustrated.

Note: The mounting hook is pre-mounted on the bracket of the support frame. So, the mounting hook is to be removed from the bracket first.

2. Place the support frame into position as illustrated. Ensure that the slot at the top side of the support frame is captured by the mounting hook.
3. Fasten the mounting hook with a small screw (reference 3 image 1-9) at the top and a large screw (reference 2 image 1-9) at the bottom as illustrated. Use for that a 3mm Allen wrench and a 10mm Allen wrench.

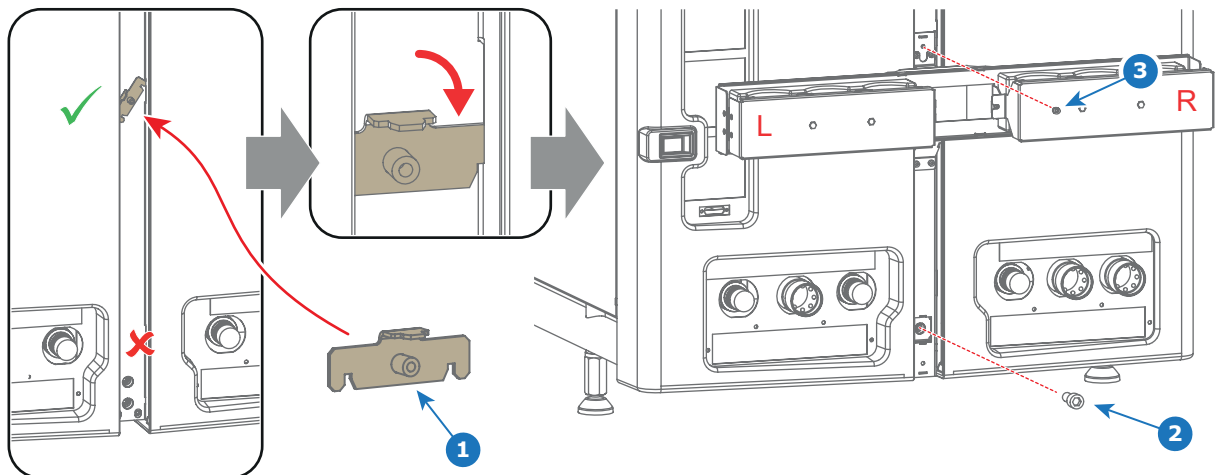


Image 1-9

4. Open the clamps for the hoses. Use a 3mm Allen wrench to release the two screws (reference 4 image 1-10).

5. Connect the hoses with the projector and guide the hose through the support frame.

Caution: Ensure to connect the hoses correctly. See labeling on the hoses and projector. For detailed instructions see installation manual of the projector.

Caution: Do not interchange the different cooling circuits with each other! Otherwise the system will fail.

Caution: The minimum bend radius of the hoses is 30 centimeter.

Note: Depending on the projector type six or four hoses have to be installed.

6. Close both clamps and fasten with a screw (reference 4 image 1-10). Use a 3mm Allen wrench.

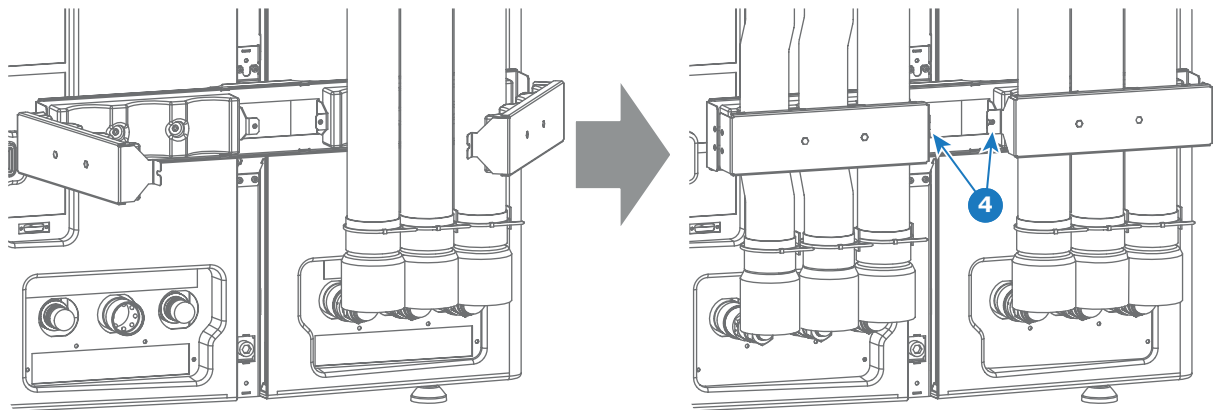


Image 1-10

1.5 Installing the support frame for hoses downwards



This procedure assumes that the hoses are not yet connected with the projector. If connected, disconnect the hoses prior to start with this procedure.

Necessary tools

- 3mm Allen wrench
- 10mm Allen wrench

How to install the support frame for hoses going downwards?

1. Slide and rotate the mounting hook (reference 1 image 1-11) into the lower slot at the rear side of the projector as illustrated.
Note: The mounting hook is pre-mounted on the bracket of the support frame. So, the mounting hook is to be removed from the bracket first.
2. Place the support frame into position as illustrated. Ensure that the slot at the top side of the support frame is captured by the mounting hook.
3. Fasten the mounting hook with a small screw (reference 3 image 1-11) and a large screw (reference 2 image 1-11) as illustrated. Use for that a 3mm Allen wrench and a 10mm Allen wrench.

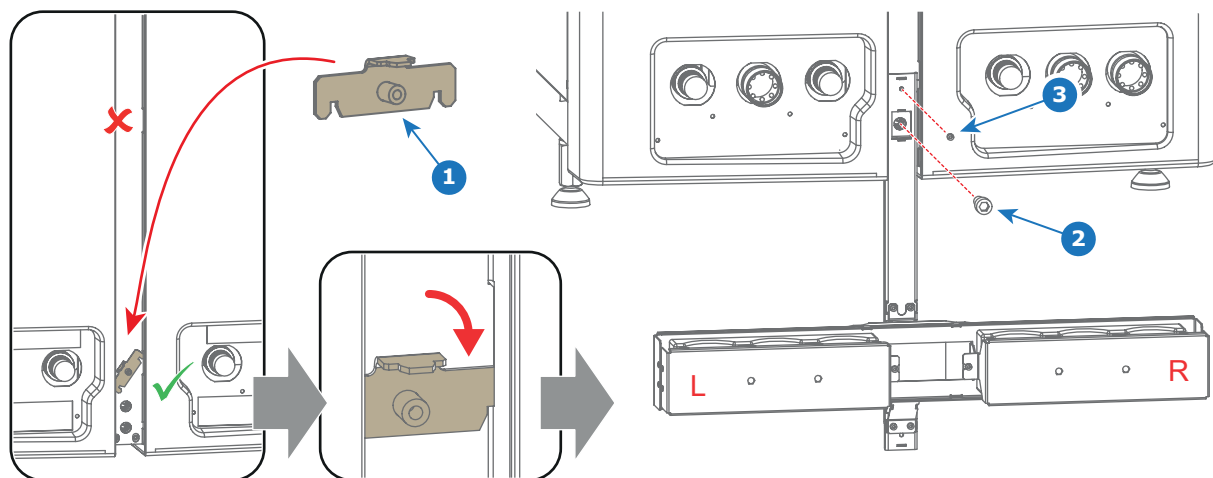


Image 1-11

4. Open the clamps for the hoses. Use a 3mm Allen wrench to release the two screws (reference 4 image 1-12).

5. Connect the hoses with the projector and guide the hose through the support frame.

Caution: Ensure to connect the hoses correctly. See labeling on the hoses and projector. For detailed instructions see installation manual of the projector.

Caution: Do not interchange the different cooling circuits with each other! Otherwise the system will fail.

Caution: The minimum bend radius of the hoses is 30 centimeter.

Note: Depending on the projector type six or four hoses have to be installed.

6. Close both clamps and fasten with a screw (reference 4 image 1-12). Use a 3mm Allen wrench.

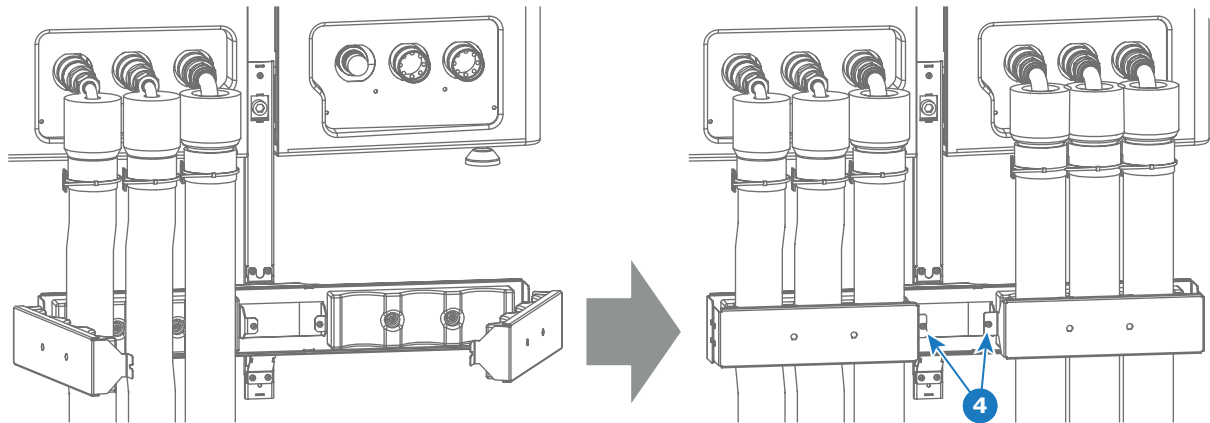


Image 1-12

1.6 Installing insulation shells projector side hoses upwards

Necessary parts

- Insulation shells hoses projector rear-left side upwards.
- Insulation shells hoses projector rear-right side.

How to install the insulation shells for hoses upwards oriented?

1. Check if the insulation shells to install are the correct one. Two sets are needed. One marked with text 'LEFT SIDE HOSES UP' and one marked with the text 'RIGHT SIDE'.

2. Disassemble one set by removing the two spring cotters (reference 8 image 1-13) and pull out the pins (reference 7 image 1-13).

3. Pivot the upper insulation shell (smallest piece, reference 5 image 1-13) into position as illustrated.

4. Place the lower insulation shell into position (reference 6 image 1-13).

Caution: In case the projector model has only 4 hoses then insert the dummy sealing block (reference 10 image 1-5) in the free slots of the insulation shells.

5. Join both insulation shells together by inserting the two pins (reference 7 image 1-13). Secure each pin with a spring cotter (reference 8 image 1-13).

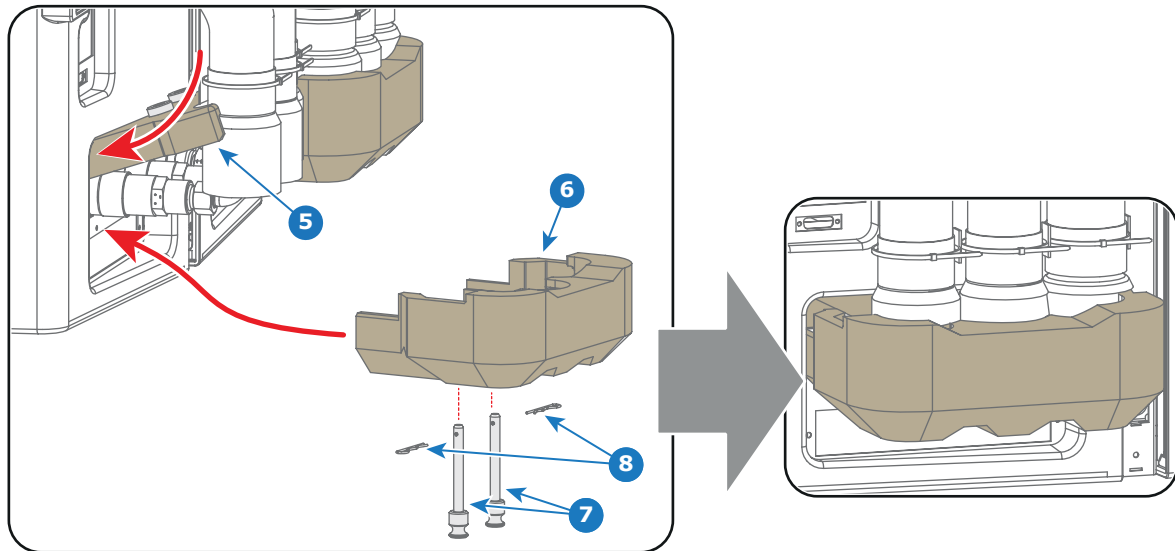


Image 1-13

6. Repeat this procedure from step 2 to install the second set of insulation shells.

1.7 Installing insulation shells projector side hoses downwards

Necessary parts

- Insulation shells hoses projector rear-left side upwards.
- Insulation shells hoses projector rear-right side.

How to install the insulation shells for hoses downwards oriented?

1. Check if the insulation shells to install are the correct one. Two sets are needed. One marked with text 'LEFT SIDE HOSES DOWN' and one marked with the text 'RIGHT SIDE'.
2. Disassemble one set by removing the two spring cotters (reference 8 image 1-14) and pull out the pins (reference 7 image 1-14).
3. Pivot the lower insulation shell (smallest piece, reference 5 image 1-14) into position as illustrated.
4. Place the upper insulation shell into position (reference 6 image 1-14).
Caution: *In case the projector model has only 4 hoses then insert the dummy sealing block (reference 10 image 1-5) in the free slots of the insulation shells.*
5. Join both insulation shells together by inserting the two pins (reference 7 image 1-14). Secure each pin with a spring cotter (reference 8 image 1-14).

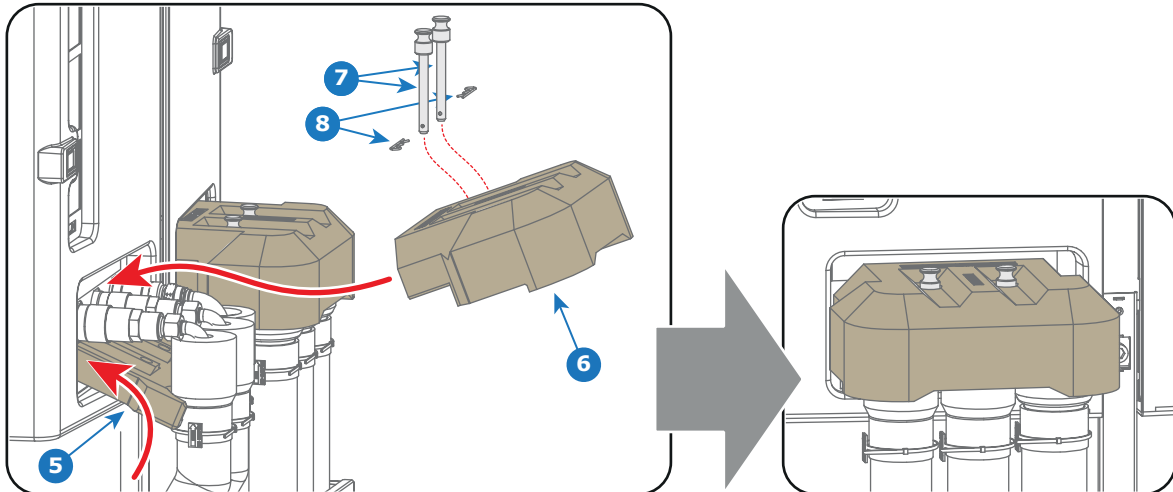


Image 1-14

6. Repeat this procedure from step 2 to install the second set of insulation shells.

1.8 Installing insulation shells on the chiller side

Necessary tools

3mm Allen wrench.

Necessary parts

One set of insulation shells per chiller.

How to install the insulation shells?

1. Disassemble one set by releasing the two captive screws (reference 10 image 1-15) and removing the screw in the middle of the set (reference 11 image 1-15). Use a 3mm Allen wrench.
2. Place one insulation shell into position as illustrated.
Caution: Ensure that the slot at the inner side of the insulation shell matches with the connector of the hoses. See detail image 1-15.
3. Place the second insulation shell into position.
4. Join both insulation shells together by fastening the two captive screws (reference 10 image 1-15) and inserting the screw in the middle (reference 11 image 1-15). Use a 3mm Allen wrench.

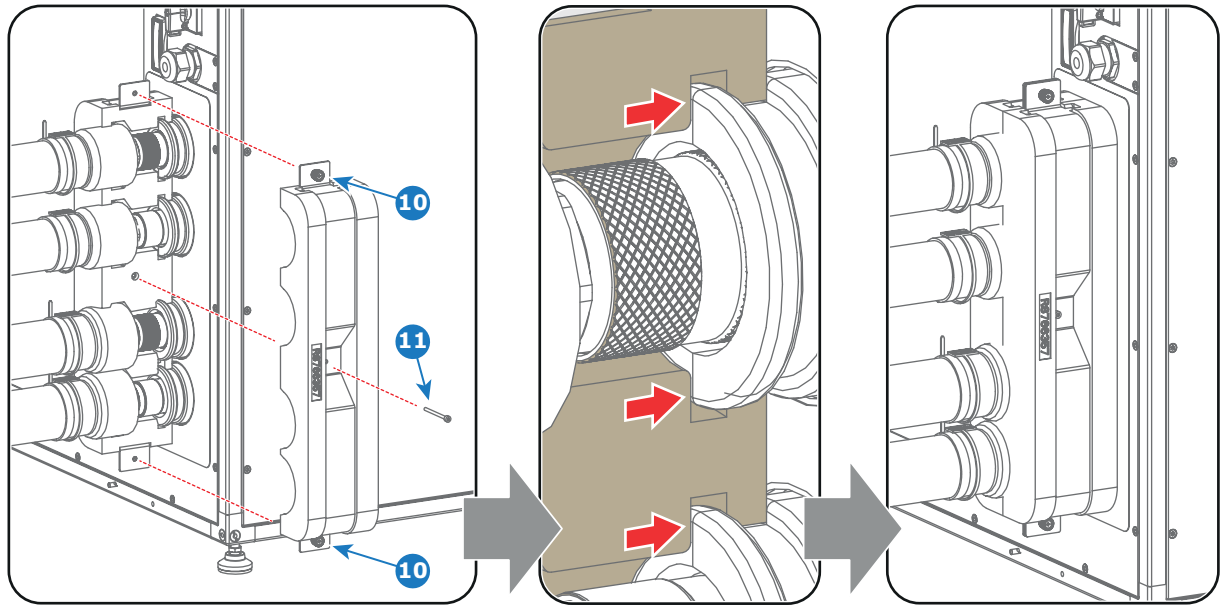


Image 1-15

1.9 Installing the plastic catch basin

On or two plastic catch basin?

Depending on the projector type one or two plastic catch basin has to be installed.

Where to position the plastic catch basin(s)?

1. For each projector model place a plastic catch basin at the bottom rear of the projector. See illustration reference 1.

2. Is this a DP4K-45L or DP4K-60L series projector?

If yes, place second plastic catch basin at the bottom front of the projector. See illustration reference 2.

Note: Reference 3 in the illustration shows the exit location of the projector drain tubes.

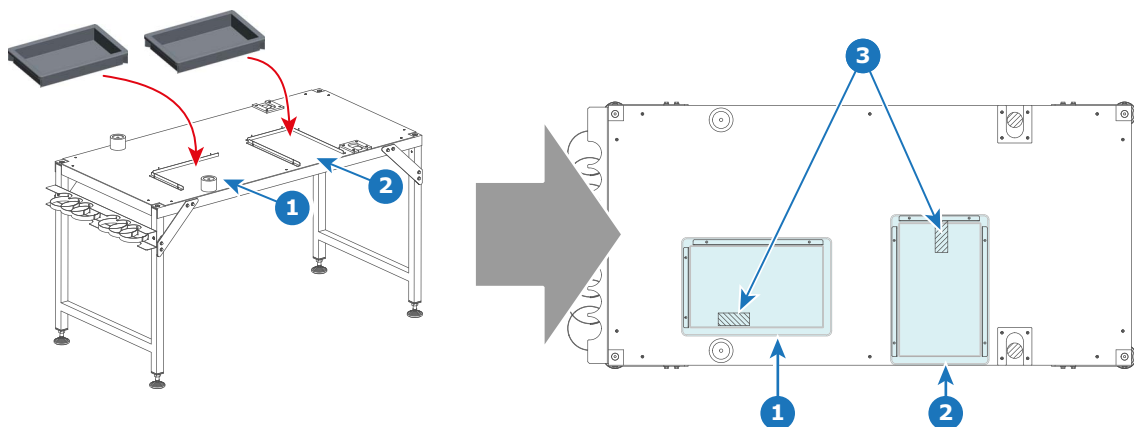


Image 1-16

1.10 Installing the castor wheels



CAUTION: Only use castor wheels in case the surface where the chiller will stand is leveled.



CAUTION: Do not stack chillers with castor wheels mounted!

Necessary tools

- Open end wrench 17 mm
- Forklift

How to install the castor wheels on the chiller

1. Raise the chiller without tilting about 25 cm above the floor. Use a forklift.
Caution: Do not tilt the chiller!
2. Turn the four feet out of the chiller bottom plate. Use a 17 mm open end wrench to loosen the lock nut of the foot.
3. Screw in the castor wheels. Use 17 mm open end wrench to fasten the castor wheel.

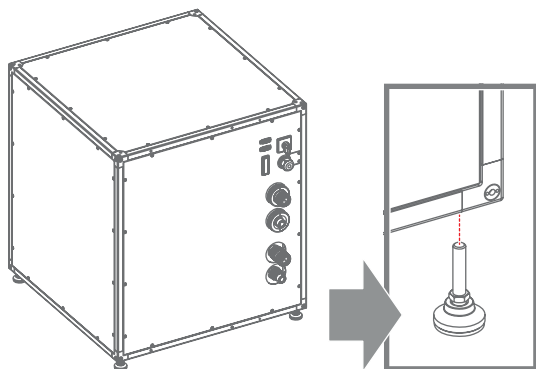


Image 1-17

