



When is nexTouch™ the Right Fit?

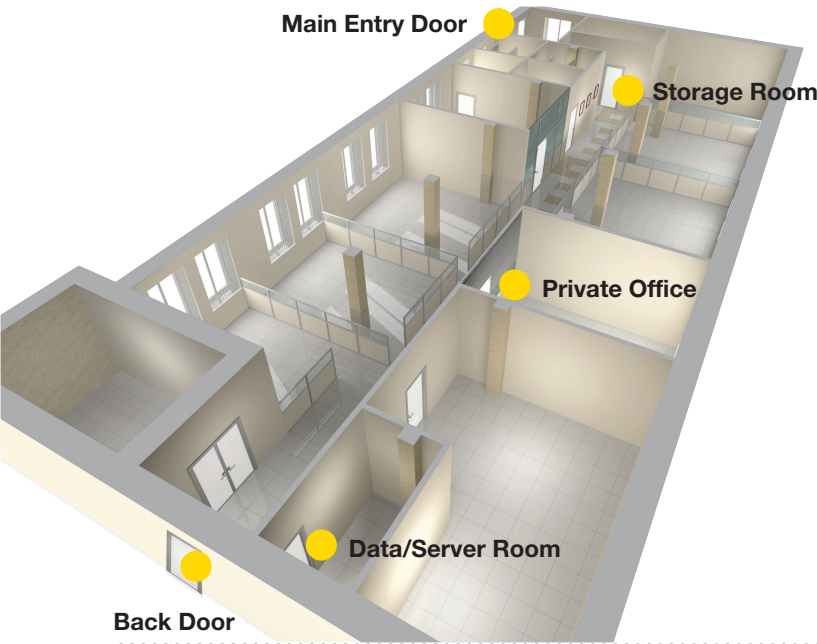
Commercial Grade Electronic Lever Lock for Small Business Applications



084601



084600



nexTouch Use Cases

Features may vary based on integration partner.



Protect Assets and Data

Secure management offices or record/server rooms and get audit history to track when rooms were accessed, and by whom.



Manage Employee Access

Create up to 500 pin codes for employees, set access schedules for each and ensure proper lock-up after hours.



Simplify Unattended Deliveries

Never miss a delivery again by providing your delivery driver with temporary access to a back entry door.



Manage From Anywhere

Most Z-Wave® and ZigBee® integration partners offer the ability to monitor your nexTouch and manage access from anywhere.

Check Your Door Specifications

Certifications:

ANSI/BHMA A156.2 Grade 1
UL Listed for use on fire doors up to 3 hours
A250.13 Windstorm listed

Face Bore: 2-1/8"

Edge Bore: 1"

Backset: 2-3/4"

Door Thickness: For use on 1-3/8" thick doors, a special thin door kit must be ordered (Part number 14-4761-0106)

ANSI Strike: 4-7/8" x 1-1/4" x 1-1/4" lip to center (Supplied Standard)

Latch: 2-3/4" backset 1/2" throw

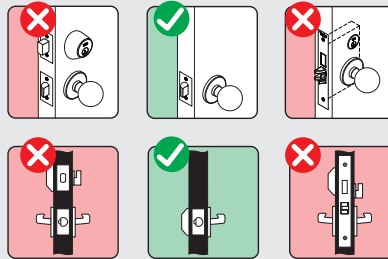
Cylinder: 6 Pin

Yale Locks & Hardware

225 Episcopal Road, Berlin, CT 06037 USA
YaleHome.com

Customer Service
1-800-438-1951 | 8am - 4:30pm EST
Service@yalelock.com

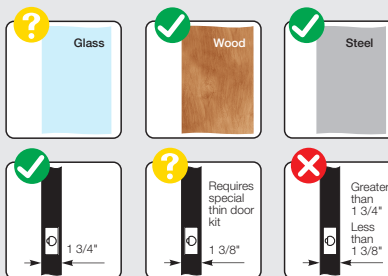
Door Must Have A Single Hole



Check Existing Hardware & Clearance



Check Door



Check for Ease of Locking

