

ENGLISH

Signature Series Deadbolt with Home Connect

Installation and User Guide

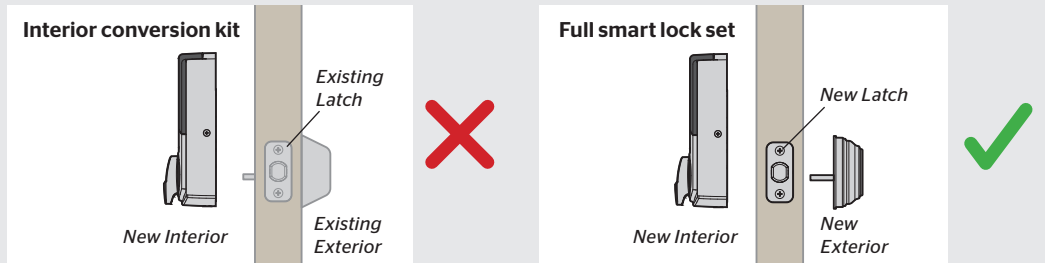
Required Tools

<p>Kit "A"</p> <p>Black mounting plate A1</p> <p>Black adapter X1</p> <p>Interior assembly screws D</p> <p>Mounting plate screws A2</p> <p>Interior cover screws E</p>	<p>Kit "B"</p> <p>Gold mounting plate B1</p> <p>Gold adapter X2</p> <p>Black adapter X1</p> <p>Interior assembly screws D</p> <p>Mounting plate screws B2</p> <p>Interior cover screws B3</p> <p>Interior cover screws E</p>	<p>Kit "C"</p> <p>Silver mounting plate C1</p> <p>Silver adapter X3</p> <p>Gold adapter X2</p> <p>Interior assembly screws D</p> <p>Mounting plate screws C2</p> <p>Interior cover screws E</p>	<p>Interior Assembly</p> <p>Battery pack G</p> <p>Interior cover F</p> <p>Interior assembly H</p>	<p>Latch</p> <p>J</p> <p>Drive-in latch K</p> <p>"K" is not included. If needed, please contact Kwikset to order a drive-in latch for your lock.</p>	<p>Strike L</p> <p>Keys M</p> <p>SmartKey tool N</p>	<p>Latch screws 03809 P Q</p> <p>Strike screws 46780 R S</p>	<p>Exterior Assembly</p> <p>Adapter ring T</p> <p>Cylinder guard U</p> <p>Guard cover V</p> <p>Cylinder W</p>
--	--	--	---	---	--	--	--

1 Full smart lock vs interior conversion kit

This package contains a full smart lock set as well as interior parts that can be used with your existing deadbolt exterior to convert your mechanical lock into a smart lock.

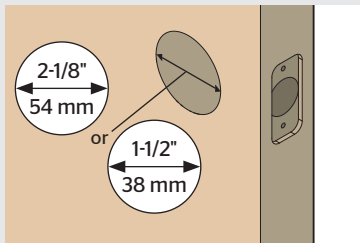
The following steps will show you how to install the **full smart lock set**. If you are installing the interior conversion kit, please refer to the other instruction sheet in the package.



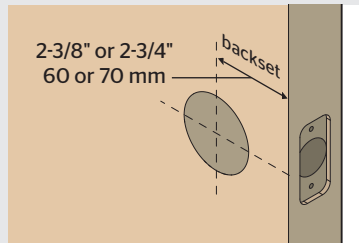
2 Prepare the door and check dimensions

⚠ If drilling a new door, use the supplied template and the complete door drilling instructions available at www.kwikset.com/doorprep

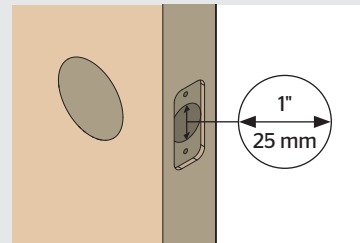
A Measure to confirm that the hole in the door is either 2-1/8" (54 mm) or 1-1/2" (38 mm).



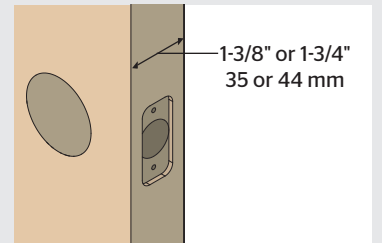
B Measure to confirm that the backset is either 2-3/8" or 2-3/4" (60 or 70 mm).



C Measure to confirm that the hole in the door edge is 1" (25 mm).



D Measure to confirm that the door is either 1-3/8" or 1-3/4" (35 mm or 44 mm) thick.

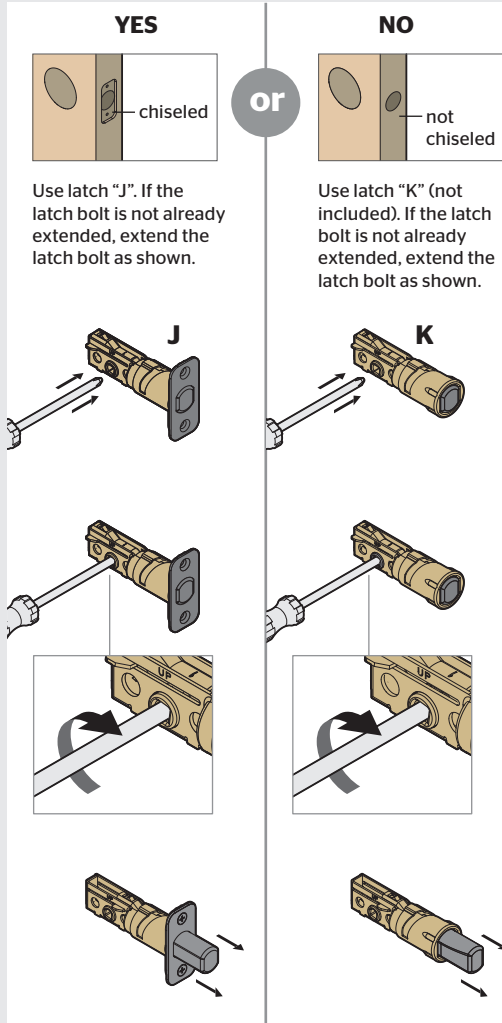


Note: Additional door preparation may be required for doors with 1-1/2" (38 mm) holes. Consult the deadbolt drilling instructions at www.kwikset.com/doorprep

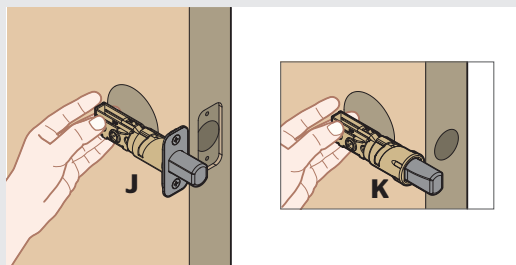
3 Install the latch and strike



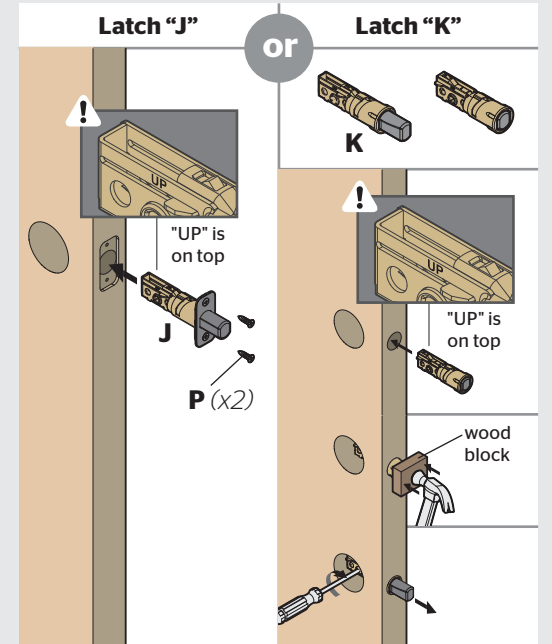
A Is the door edge chiseled?



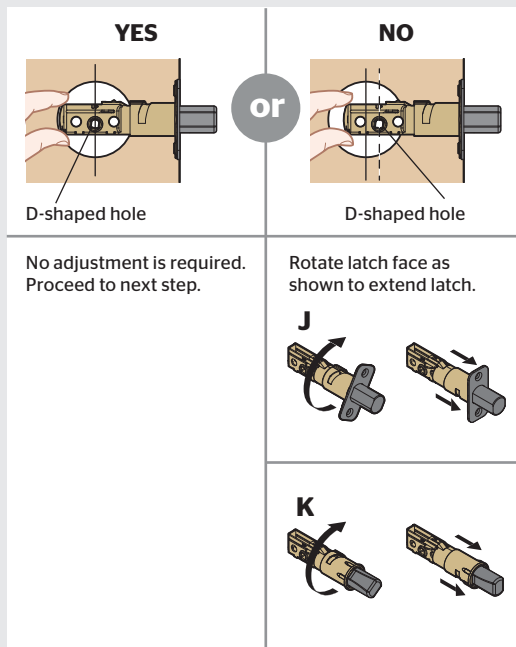
B Hold the latch in front of the door hole, with the latch face flush against the door edge.



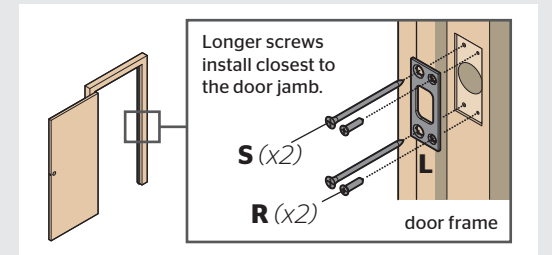
D Which latch are you installing?



C Is the D-shaped hole centered in the door hole?

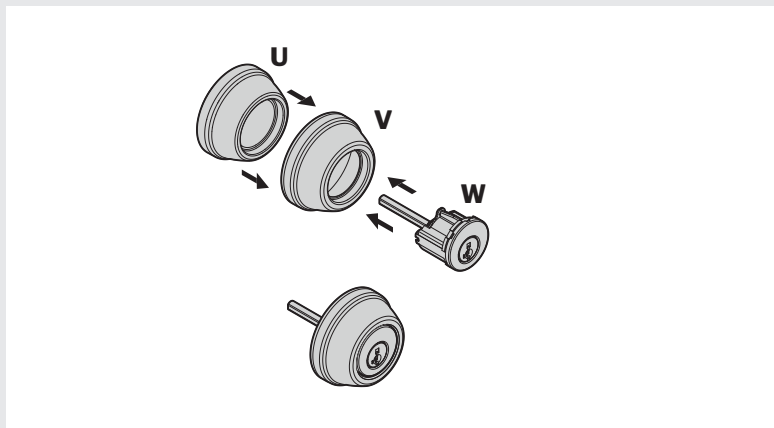


E Install strike on the door frame.
⚠ Make sure the hole in the door frame is drilled a minimum of 1" (25 mm) deep.

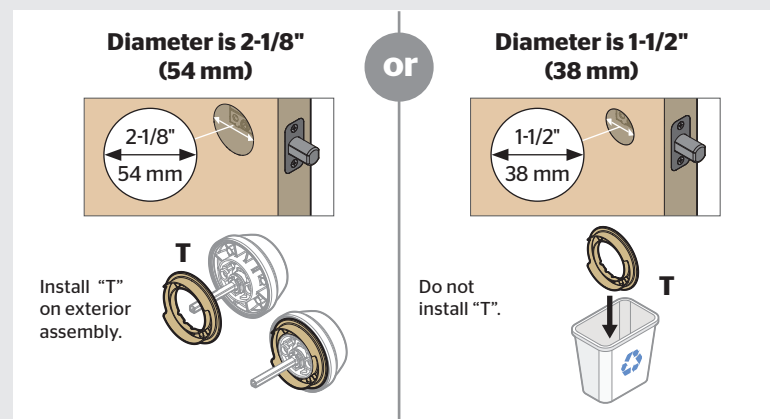


4 Install the exterior assembly and mounting plate

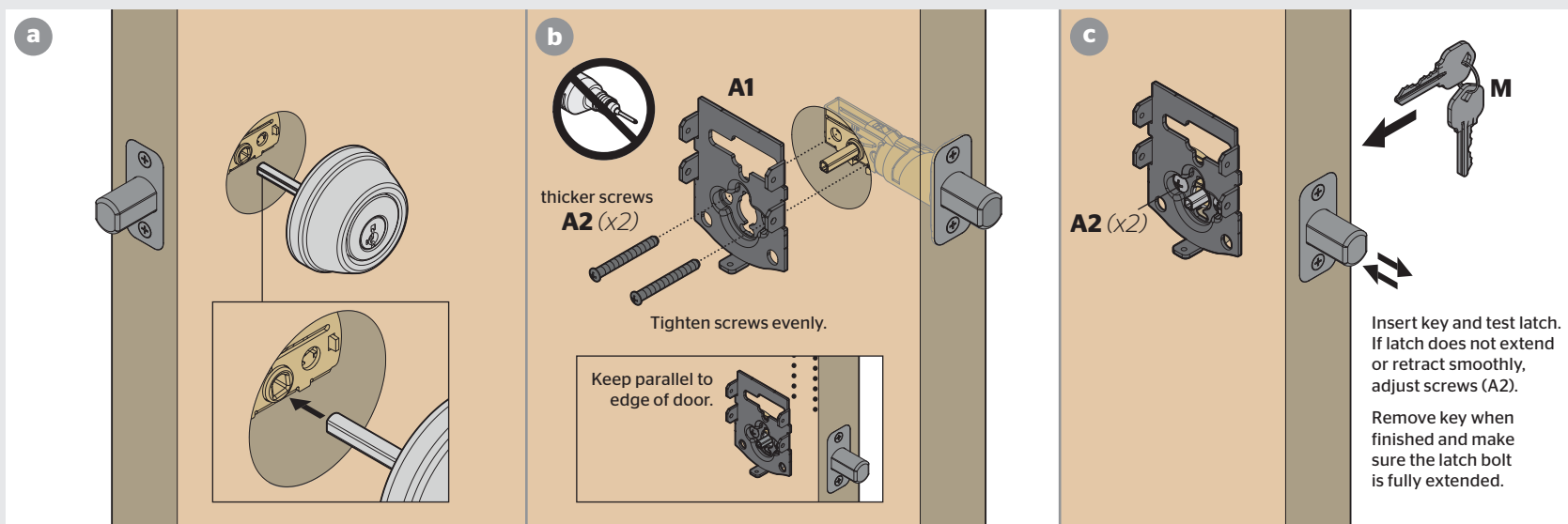
A Install cylinder in exterior assembly.



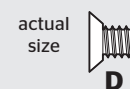
B What is the diameter of the hole in the door?



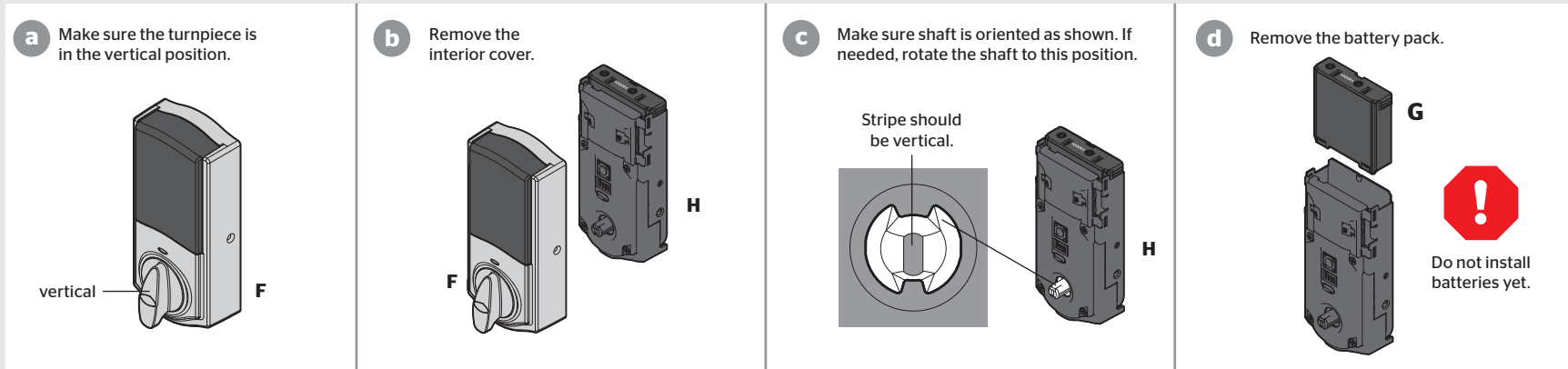
C Install exterior assembly and mounting plate. Use the parts in Kit "A."



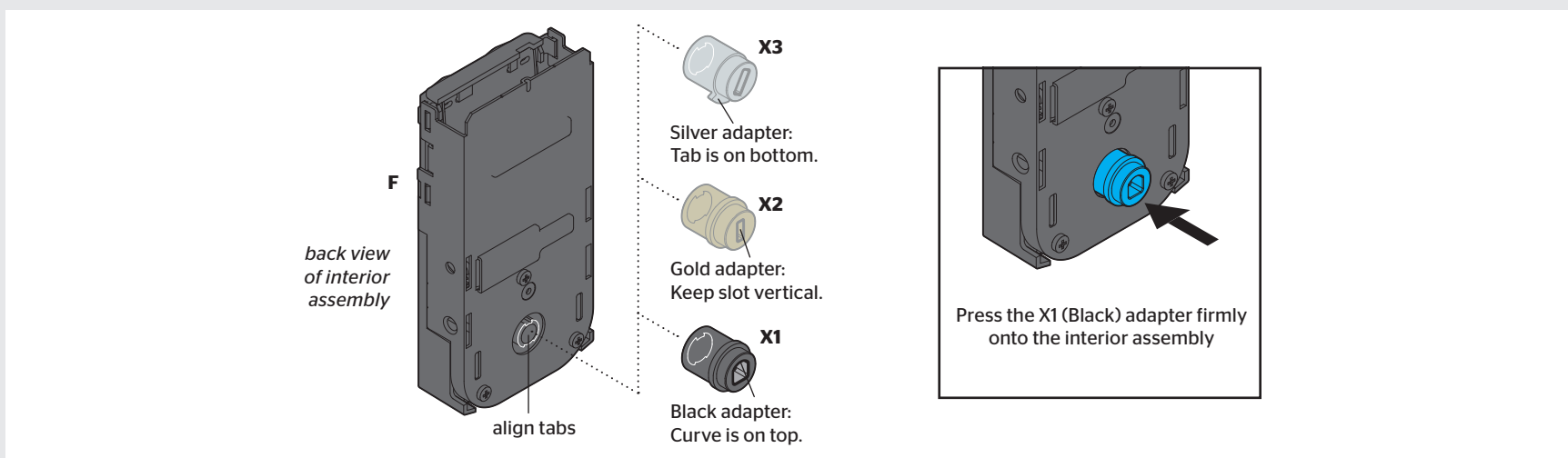
5 Install interior assembly



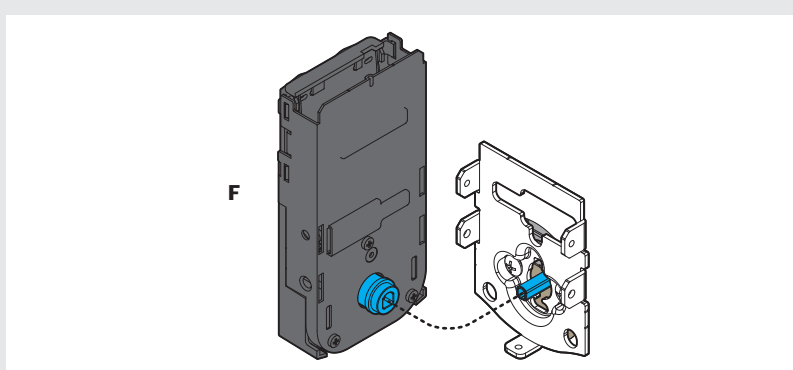
A Remove the interior cover and battery pack.



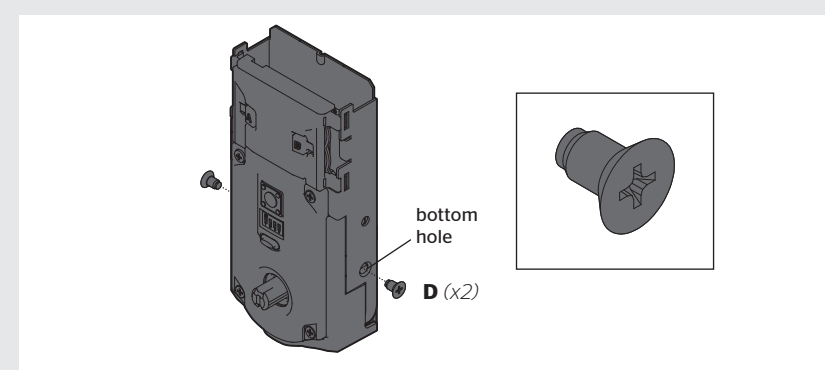
B Install the adapter on the interior assembly.



C Align the turnpiece shaft with the torque blade.



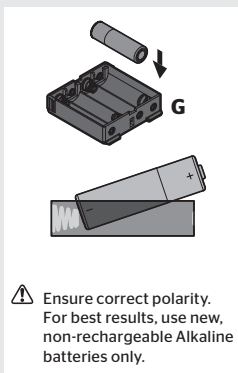
D Secure with two (2) interior assembly screws from Kit "A."



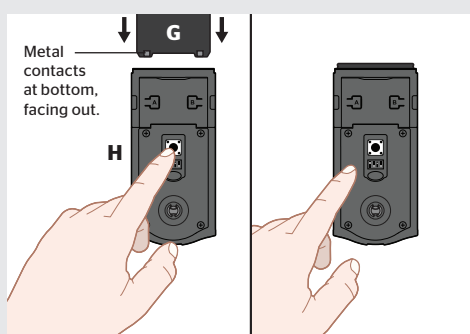
6 Perform the door handing process

⚠ This step will teach the lock the orientation of your door and is crucial for lock operation.

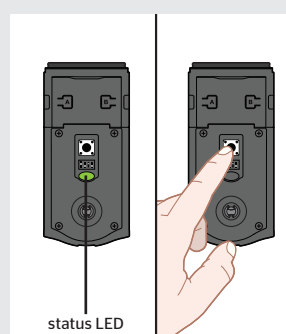
A Install 4 AA batteries in the battery pack.



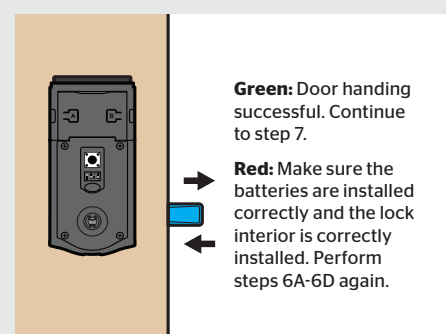
B Make sure the door is open. Insert the battery pack while **PRESSING AND HOLDING** the Program button. Release the button when the battery pack is all the way inside the lock interior.



C The Status LED will flash red and green, and the lock will beep. **Press and release the Program button again.**



D The latch bolt will retract and extend on its own to learn the orientation of the door. Did the Status LED turn green or red?

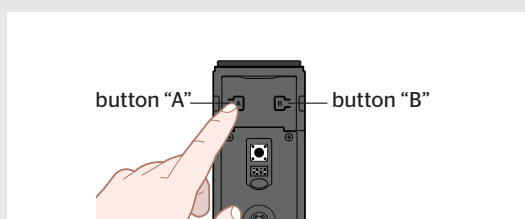


If the bolt does not move, make sure the batteries are installed correctly, and perform steps 6A-6D again.

7 Add the lock to your smart home system

A Initiate the process to add the lock to your system at your smart home controller. Refer to your smart home system instructions for more information.

B When prompted by your smart home system to add the lock, press button "A" on the lock interior four times.

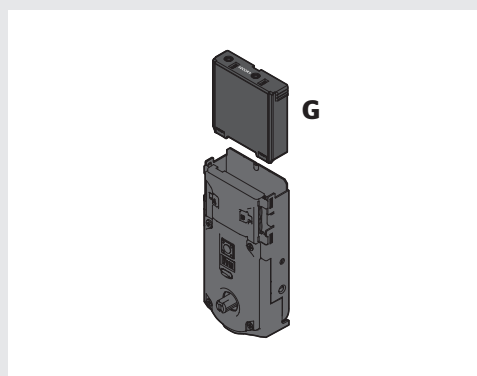


C If successful, re-name the lock in your system (if applicable).

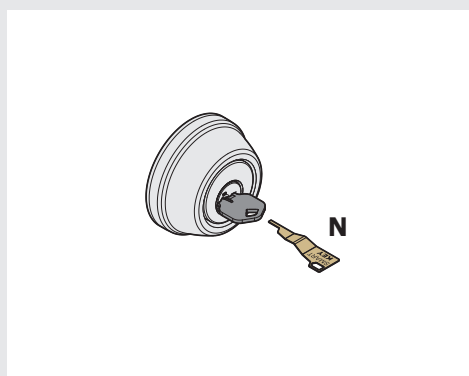
D If unsuccessful, press button "B" nine times. Perform steps 7A-7C again. If still unsuccessful, follow your smart home system's instructions to remove (exclude/unpair) the lock from any other network. Then perform steps 7A-7C again.

8 Re-key the lock (if needed)

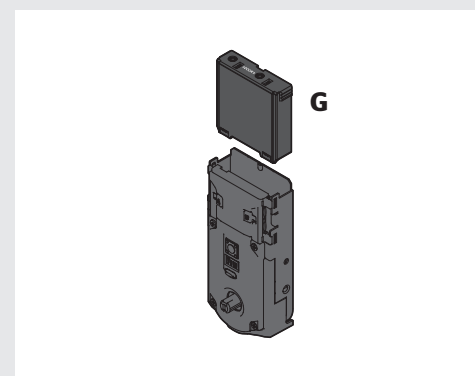
A **IMPORTANT:** Remove battery pack before re-keying.



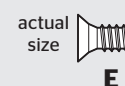
B Re-key the lock to work with your existing key. See the supplied SmartKey Re-key instructions for more information.



C Reinstall battery pack.

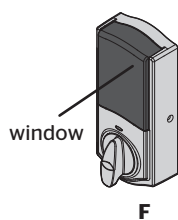


9 Install the interior cover

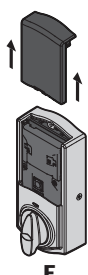


Important Information about the interior cover:

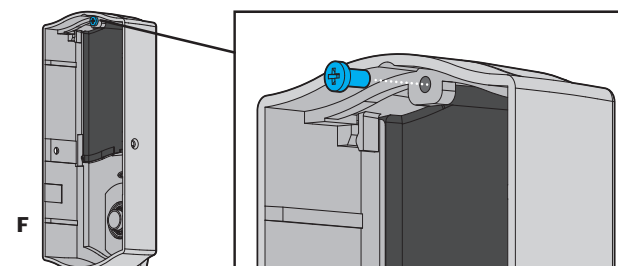
The window on the interior cover is locked by default to prevent someone from tampering with your lock's settings.



If you wish to unlock the window, you can slide it up for more convenient access to the programming buttons while the cover is installed.



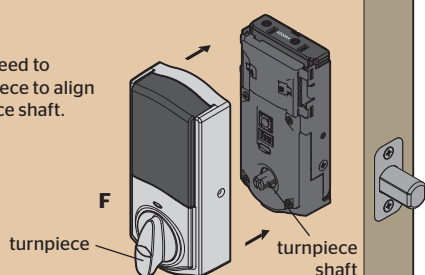
To unlock the window, remove the security screw.



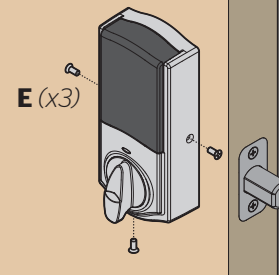
Cover Installation:

a Install cover.

Note: You may need to rotate the turnpiece to align with the turnpiece shaft.

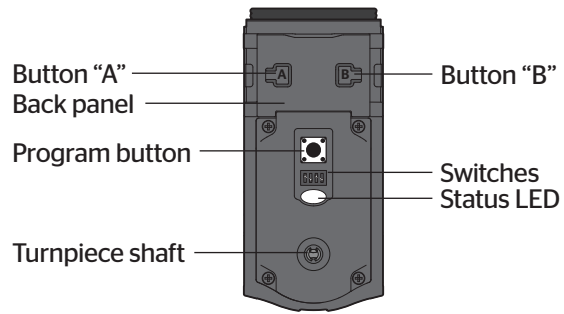


b Install screws from Kit "A."

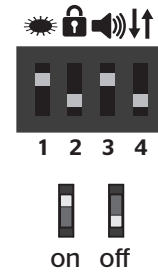


Note: The interior cover (F) and screws (E) must be removed for battery pack access.

Kwikset Convert Back Panel at a Glance



Switches



1. Status LED

Door lock status LED blinks every 6 seconds. ON position is factory default.

2. Auto-Lock ⚠️

Automatically re-locks door 30 seconds after unlocking. OFF position is factory default.

⚠️ CAUTION: With this feature enabled, it is possible to lock yourself outside.

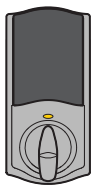
3. Audio

Beeping sound is heard during programming and normal operation. ON position is factory default.

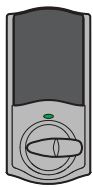
4. Invert ⚠️

Only used with interior conversion kit if the Status LED is communicating the opposite door lock status.

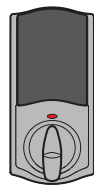
Status LED Notifications



Amber flash
Door is locked.



Green flash
Door is unlocked.



Red flash
The 4 AA batteries in the interior are low and need to be replaced.

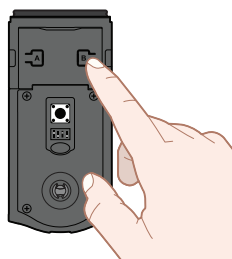
Factory Reset

A factory reset will delete the lock from your smart home system.

<p>1 Remove battery pack.</p>	<p>2 Press and HOLD the Program button while reinserting the battery pack.</p> <p>Keep holding the button for 30 seconds until the lock beeps and the status LED flashes red.</p>
<p>3 Press the Program button once more. When the LED flashes green and you hear two beeps, the lock has been reset.</p>	<p>4 Perform the door handing process again to teach the lock the orientation of the door and pair the lock to your smarthome system.</p>

Network Information

Removing the lock from the network
Press button "B" on the lock interior nine times.



ZigBee® System Notes

ZigBee is a "Wireless mesh network", and results may vary based on building construction and communication path with 35+ feet being typical installed distance in a standard home environment and 250+ feet when the lock has a clear line of sight with the smart home controller. It may be necessary to install additional ZigBee devices to enhance the communication path between the lock and controller for a more robust ZigBee network.

Important Safeguards

1. Read all instructions in their entirety.
2. Familiarize yourself with all warning and caution statements.
3. Remind all family members of safety precautions.
4. Always have access to your lock's standard key.
5. If using the Auto-Lock feature, make sure to have your standard key with you to prevent locking yourself out.
6. Replace low batteries immediately.

⚠️ CAUTION: Prevent unauthorized entry. Restrict access to your lock's back panel and routinely check your settings to ensure they have not been altered without your knowledge.

⚠️ WARNING: This Manufacturer advises that no lock can provide complete security by itself. This lock may be defeated by forcible or technical means, or evaded by entry elsewhere on the property. No lock can substitute for caution, awareness of your environment, and common sense. Builder's hardware is available in multiple performance grades to suit the application. In order to enhance security and reduce risk, you should consult a qualified locksmith or other security professional.