

Control4® Alexa® Voice Control Quick Start Guide

Control your smart home with just your voice

Add Alexa voice control to your Control4 Smart Home to orchestrate lighting, comfort, and smart home scenes throughout your entire home.

Requirements

To use Alexa voice control with your Control4 system you must have:

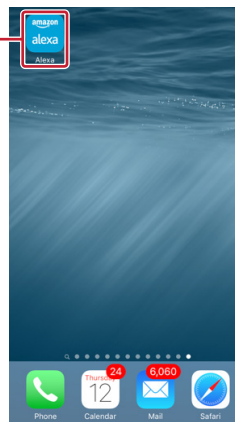
- An Alexa-compatible device such as an Amazon Echo, Dot, Tap, or FireTV with Voice Remote and an Amazon account at www.amazon.com
- Control4 Smart Home running OS 2.8.2 or newer
- Control4 4Sight subscription

Connecting your Control4 Smart Home to Alexa

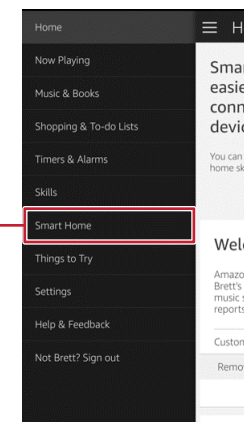
- 1 On your smartphone or tablet, download the Amazon Alexa app from your app store or go to alexa.amazon.com from a web browser.



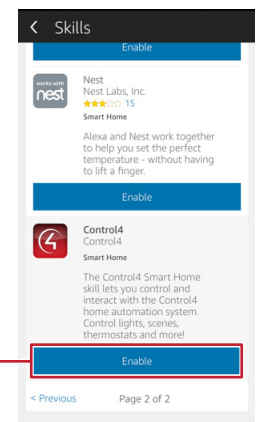
- 2 Open the Alexa app and log in to your amazon.com account.



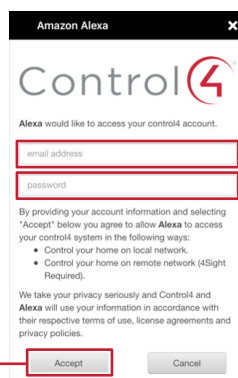
- 3 Select **Smart Home** from the menu.



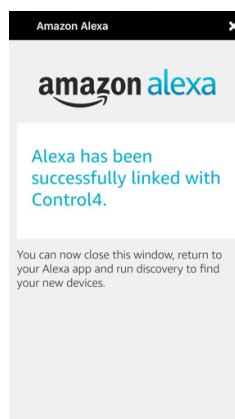
- 4 Search for the **Control4 Smart Home Skill** and select **Enable**.



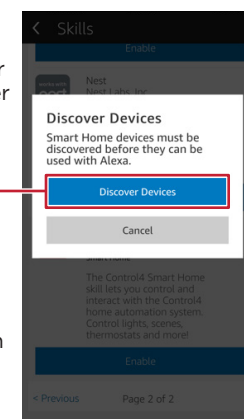
- 5 Enter your Control4 account information to link your Control4 account to Alexa, then select **Accept** to continue.



- 6 Your Control4 account is linked to your Amazon Alexa account.



- 7 Select **Discover Devices**, and Alexa scans your home to discover all the devices that can be controlled.

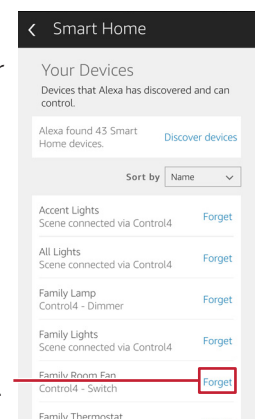


Most lights, lighting scenes, and thermostats in your Control4 Smart Home can be controlled by Alexa.

- 8 Discovered devices are displayed in *Your Devices* and you can now control them!

Example:
"Alexa, turn on Master Light."

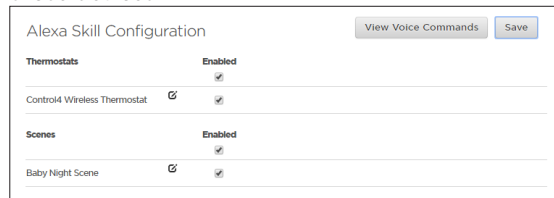
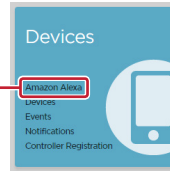
To tell Alexa to forget a discovered device, select **Forget** next to the device name.



Managing the voice commands

With your Control4 account, you can manage the voice-controlled devices in your Control4 Smart Home. You can simplify the voice-control experience by disabling devices you don't want to control, and you can customize the voice commands for your devices.

- 1 Log in to your account at customer.control4.com.
- 2 Under *Devices*, select **Amazon Alexa**.
- 3 In the *Alexa Skill Configuration* section, you can enable or disable any voice-controlled devices and edit the voice commands for those devices.



Alexa Skill Configuration

Thermostats Enabled

Control4 Wireless Thermostat ☒

Scenes Enabled

Baby Night Scene ☒

View Voice Commands Save



To enable or disable the device, select or deselect the **Enabled** check box next to the device.



To change the voice command for a device, click the **Edit** icon.



After making any changes, click **Save**. After you save, you must tell Alexa to discover devices again.

- 4 To view available voice commands, click **View Voice Commands**.

Each device type has several built-in voice commands. All available commands for your system are listed in the *Commands* column.

For example:

- The thermostat can be set to an exact temperature or raised and lowered by a few degrees.
- Dimmers can be turned on and off or set to specific brightness.
- Lighting scenes can be turned on and off.

Amazon Alexa Voice Commands for Control4		
Here is your personalized list of the most common voice commands that you can use to speak to your Control4 system through Alexa.		
Print		
Thermostats	Commands	
Control4 Wireless Thermostat	Alexa, set the Control4 Wireless Thermostat to 78 degrees. Alexa, raise the Control4 Wireless Thermostat by 3 degrees. Alexa, lower the Control4 Wireless Thermostat by 2 degrees.	
Scenes	Commands	
Baby Night Scene	Alexa, turn on Baby Night Scene. Alexa, turn off Baby Night Scene.	
Lights	Commands	Room
Christmas Tree	Alexa, turn on Christmas Tree. Alexa, turn off Christmas Tree.	Family Room
Holiday Lights	Alexa, turn on Holiday Lights. Alexa, turn off Holiday Lights.	Family Room
Kitchen Light	Alexa, turn on Kitchen Light. Alexa, turn off Kitchen Light. Alexa, set Kitchen Light to 50%. Alexa, increase Kitchen Light by 20%. Alexa, decrease Kitchen Light by 25%.	Kitchen
Front Door Light	Alexa, turn on Front Door Light.	Outdoor Lights

Adding whole home scenes to Alexa

With help from your Control4 Dealer, you can take voice control of your home a step further with comprehensive scenes. For example, tell Alexa to activate the "Cooking" scene, and your shades close, the kitchen lights turn on, and your favorite streaming music or TV station begins to play.

More information

More information on Alexa integration with your Control4 Smart Home can be found on our website or from your Control4 Dealer. Open the URL below or scan the QR code.



Frequently asked questions

Below are a few frequently asked questions about setting up your Control4 system with Alexa. More frequently asked questions and other documentation can be found at ctrl4.co/alexa-help.

Q: How do I connect an Amazon Alexa device with Control4?

A: Go to the [Alexa Quick Start Guide](#) or watch the [Connecting Amazon Echo to Control4](#) video to learn how to connect your Amazon Alexa device with Control4.

Q: What Amazon Alexa devices will work with my Control4 system?

A: The Amazon Echo, Echo Dot, Amazon Tap and Fire TV with Voice Remote will all work with your Control4 system.

Q: Any tips on naming devices or scenes?

A: It is best to use simple one or two word descriptions using house and room names where appropriate. For example, Dining Light, Office Lamps, All Lights, House, Upstairs Thermostat, Accent Lights, Master Lights.

Q: Do all Control4 Systems work with Alexa devices?

A: You need a 4Sight subscription in order for your Control4 system to work with Alexa. Your Control system must be running OS 2.8.2 or greater.

